



CALGARY WOODTURNERS GUILD NEWSLETTER

October 6, 2015 Meeting

Issue 54, October 2016

Inside Out and Split Turnings

Editorial

Last Meeting

Instant Gallery

Meeting Locations

About Us

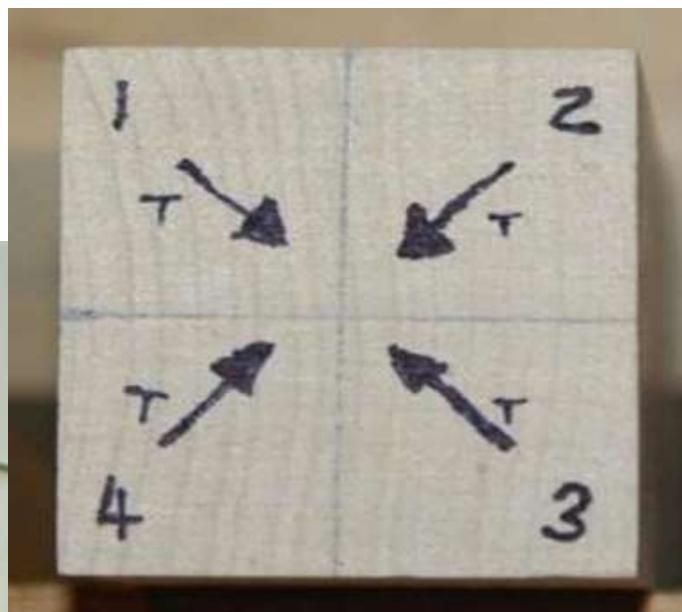
Page 2

Pages 2-6

Pages 6-8

Page 9

Page 10



From the Editor

Split turnings. I saw it. I took it apart and put it back together differently.

I still can't get my head around it, through it, or visualize it.

It's split. It made something completely different.

I can understand the inside out double turnings, but this split reassemble turning is something else again.

Especially the Chair! I think my brain is split. I'll blame that for the poor quality of some pictures.

The presentation will have to speak for itself as I can't add anything to it.

I must say the Instant Gallery is getting better and better every meeting. Keep up the amazing work everyone.

Doug Drury



Somewhere close to 7:00 Norm called the meeting to order. It was a rowdy bunch but eventually everyone settled down and we were able to meet our new members, Ed (who was almost new), Steve and Graham. Welcome to all.

Joe Van Keulen talked about the 4 display cabinets we have in retail woodworking supply stores in Calgary. It is time to change the pieces in the cabinets, and Joe needs 30-35 pieces to put in the cabinets.

Please bring pieces for the cabinets to the meeting on November 3rd.

John Penner talked about the upcoming Spruce Meadows Show and Sale. Please let John know ASAP if you will be participating. Volunteers are needed to load the trailer with the display cabinets, for set-up and take down, and for working in the booth during the show. Please see John for further details.

Tops. We Need More Tops. Last year we sold a lot of tops at the Spruce Meadows Show, and we actually ran out. Please turn as many as you can and drop them off at John's, at the November meeting, or at Black Forest. All proceeds from Top Sales go to the Interfaith Food Bank.

There was a sawdust session scheduled for October 17th. Bring your chainsaw if you would like some pieces of Manitoba Maple. Talk to Tom at the Drop In Centre. The Drop In Centre is starting an upholstery division. Now you have someplace to take that chair to get it upholstered if you don't want to or don't have the skills to do it yourself.

Greg Dahl informed the group that he knows of some big poplar trees that are coming down. A potential harvest of some free wood. See Greg for further information.

Greg also informed everybody that the guild's liability insurance has been renewed. Guild members with their own shops can piggyback on the guild policy for \$20 each. There is also a new program for those who

teach wood turning in their one shop. The teaching has to be on a one on one basis only. The cost for coverage is \$50 per year. See Greg Dahl for all the details on the insurance program.

Terry talked about the Black Forest Wood Expo the be held October 23-25. At the same time will be Black Forest Wood's 22nd Anniversary Sale. Don James volunteered to organize wood turners to demonstrate at the expo. Thanks Don.

SPLIT TURNINGS DEMONSTRATION

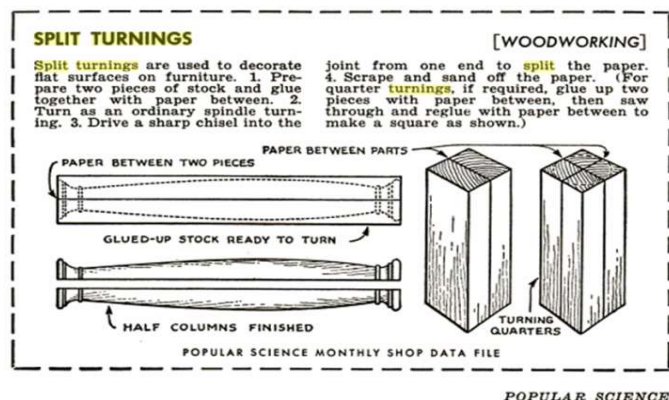
By Terry Golbeck

Split Turnings fall into 4 basic categories:

- 1) Turnings with Sacrificial Insert
- 2) Splindles split on 1/2's or 1/4's
- 3) Inside Out Turnings
- 4) Vessels, Sculpture & Furniture

Split turnings have been around for a long time. Terry showed us an article on split turnings from a 1939 issue of Popular Science.

Poplar Science 1939



1) Sacrificial Inserts

Turning Spoons is a good example of a turning with a sacrificial insert. Three pieces of wood are glued up with a piece of paper between each piece.



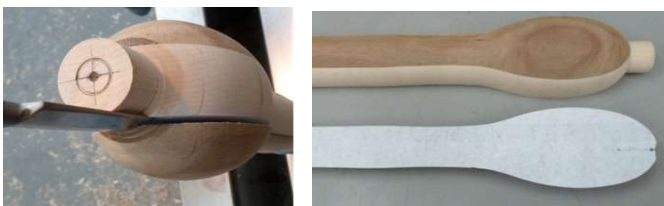
The blank is turned round



The basic spoon shape is then cut into the blank



And then the blank is split apart. The two outside pieces then become your spoons



Here is another piece that was made utilizing a sacrificial insert.



2) Splindles split on 1/2's or 1/4's

Terry showed us pictures of a number of pieces of furniture where a glued up blank of 4 pieces had been turned, and then split apart. Each piece was then used as a leg. This is technique used quite a bit by Stephen Hogbin.

Pieces by Stephen Hogbin:



3) Inside out Turnings

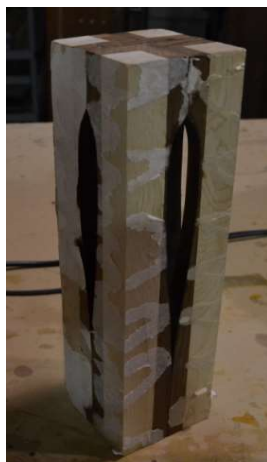
Carl Smith showed us how he does his inside out turnings. The steps involved are:

Take 4 pieces of wood and glue them together with a piece of paper between each piece. Turn them on the lathe leaving the ends unturned so you have a flat piece to work with in the next step. The picture to the right shows the four pieces glued together and turned. Each piece consists of a piece of maple with walnut on each side.

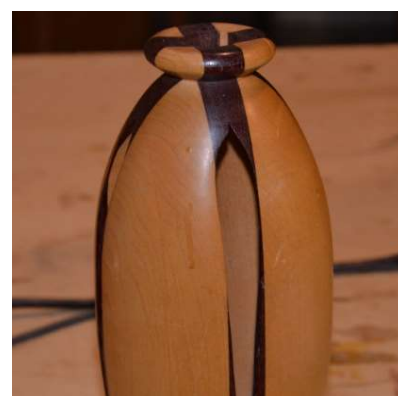


You may want to sand and finish the turned part of the piece at this point, as it will become the inside of the piece when it is finished.

Now split the 4 pieces apart and glue them back together with the turned part on the inside, the unturned part on the outside, as shown to the right.



Remount the piece on the lathe and finish turning, sanding, and finishing. The end product, with the centre hollowed out and turned, is shown below:



Terry showed us some more pictures of inside out turnings



4) Vessels

The process for making Vessels is to glue two pieces together, turn a bowl, then split the two pieces and glue them back together in a different orientation. The piece below was glued back together by glueing the top of the each half of the bowl to the the other half.



Terry showed us more pictures of other vessels, some simple, some quite complex, some more sculpture and furniture than anything else.



A Coffee Table



Two Chairs and a Table made using Split Turnings



Chair by itself.



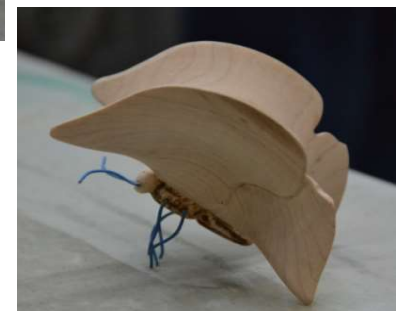
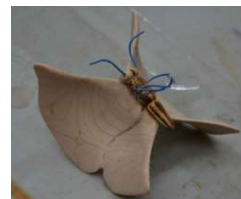
Don James showed some split pieces that he had made



becomes



Butterfly



Wilf Talbot showed us some bowls with outside and inside rings. This is a variation of the split turning that is taught by John Beaver.



Break Time!

Thanks Sherry for the Cookies!

After the break it was announced that at the Stampede Showcase several of our members won prizes for their pieces. Actually, our guild members won First (Joe Van Keulen) Second (Terry Golbeck) and Third (Sherry Willetts.)

Congratulations to all!

Charlie Willets did a quick demo on how to make a wooden spoon clacker from a piece of wood with a band saw. He then showed off his ability at playing the clacker for us. A one piece band! Well done Charlie!

Dave Beeman with Greg Dahls assistance did the raffle, and several pieces of wood and blanks exchanged hands. The 50/50 of \$105 was won by Wilf Talbot.

INSTANT GALLERY

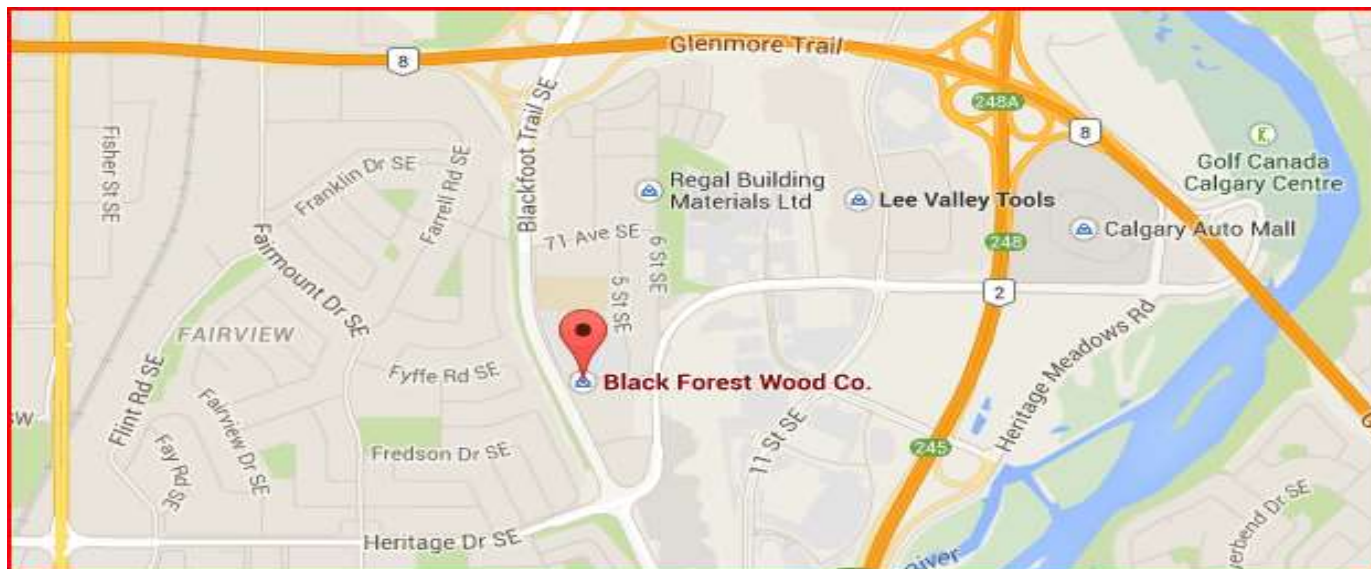






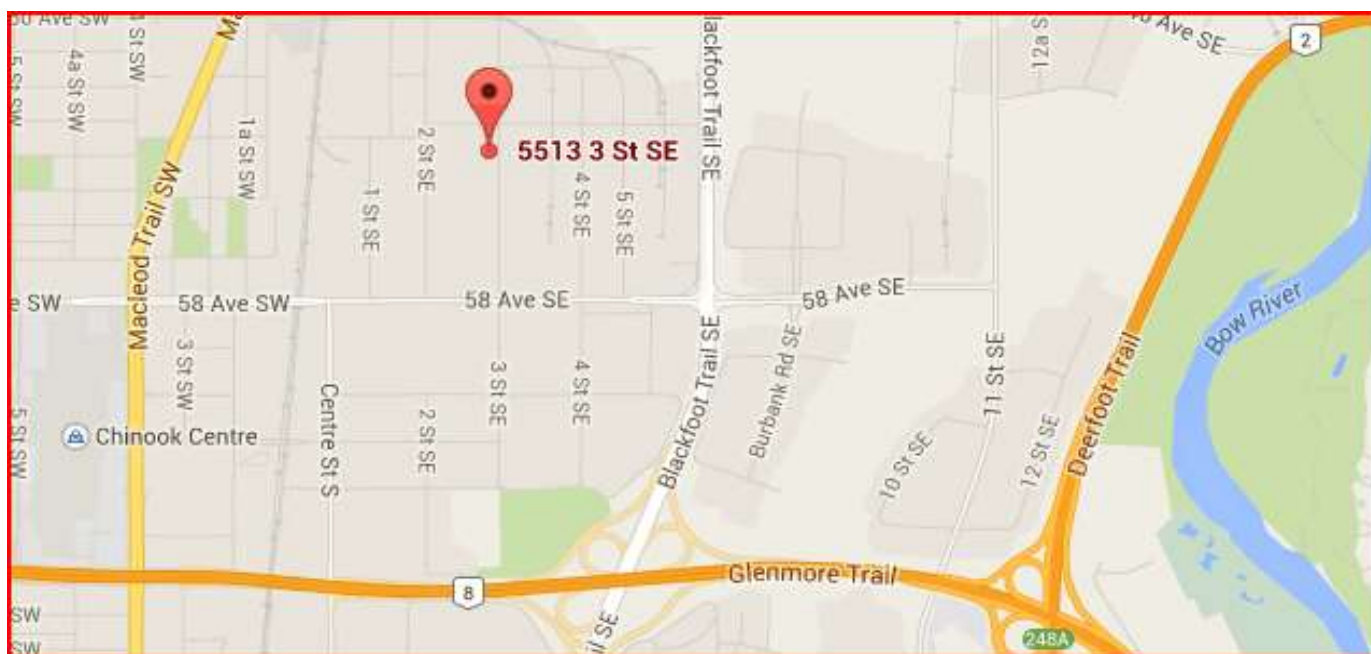
Guild Meetings

The Calgary Woodturners Guild meets at Black Forest Wood Company (603, 77 Ave SE, Calgary) the first Tuesday of each month at 7:00 PM except for July and August. Visitors are always welcome.



Sawdust Sessions

Sawdust sessions are held at the Calgary Drop-In Woodwork Shop (5513 3 Street SE). Come turn and talk wood with your fellow guild members, learn or try something new. There are always people available to answer questions and give help, and lathes to turn projects on. Visitors are always welcome, and lunch is available for \$5.00 for those who work up an appetite and want to stay.



About the Guild...

GUILD PURPOSE

To promote the art and craft of Woodturning in a way that expands the knowledge, safe practice, and enjoyment of woodturning, thereby benefitting both members and also the community

FOR THE MEMBERS:

- To provide all emembers with a method of regularly exchanging ideas and experience in woodturning
- To promote safety in woodturning
- To benefit from group size in acquiring published resources & materials

FOR THE COMMUNITY

- To bring an awareness of woodturning to the general public
- To provide charitable benefits to the community

MEETINGS

The guild meets on the first Tuesday each month (except July and August) at 7:00 PM at Black Forest Wood Co., Bay 7, 603 - 77 Avenue SE, Calgary, AB. Visitors are welcome

MEMBERSHIP DUES

Annual Dues - \$30.00 with Email, otherwise \$35.00
Dues paid on a calendar year basis

MAILING ADDRESS

Calgary Woodturners Guild
c/o Black Forest Wood Company
Bay 7, 603 - 77th Avenue SE
Calgary, AB, Canada
T2H 2B9

WEBSITE www.calgarywoodturners.com

CLUB OFFICERS AND DIRECTORS

President:	Norm Olsen
Vice President:	Garry Goddard
Treasurer:	Greg Dahl
Secretary:	Doug Drury
Director - Website Administrator:	Sherry Willetts
Director - Program Manager:	Terry Gobeck
Director - Sawdust Session coordinator:	Ken Kindjerski
Director - Sawdust Session coordinator:	Albert Daniels
Auditors:	
Bar-B-Que (Annual):	Albert Daniels
Charitable Co-ordinator	Dwayne Sims
Librarian:	Carl Smith
Membership Records:	Carl Smith
Newsletter	Doug Drury
Photographer:	Vacant
Programs:	Terry Gobeck
Public Displays:	Joe Van Keulen
Raffles:	Dave Beeman
School Liason:	Jim Jones
Spruce Meadows Sale:	John Penner
Webmaster:	Sherry Willetts
Members at Large:	Jim Leslie, Vern Steinbrecker